



The DoveTale

September 2004

Woodworkers of SouthEast Texas

Officers:

President Ray Ward, 898-4542
President elect Richard Osborn, 860-4817
Secretary Richard Hicks, 982-5226
Treasurer Howard Hartman, 835-0564

Committees:

Newsletter Richard Hicks, 982-5226
Shows Rod Ruppel, 898-7041
Librarian Kenneth Bodden, 962-4997
Purchases Jerry Shivers, 794-2274
Membership Richard Hicks, 982-5226
Programs Pete Nealley, 866-2268
Web Master Rob Emanuel, 729-9315
Projects Bill Chanley, 866-5967

Members:	92	Present:	29	Visitors:	2
----------	----	----------	----	-----------	---

[Our Next Meeting will be Oct 26th](#)

[September 27th Meeting](#)

We held our September meeting at Woodworker's Paradise. Business items included:

- Howard Hartman - \$2,388.04
- Richard Hicks - Membership at 92
- Rob Emanuel - We have several new videos in our library thanks to the generosity of David Mayer and his wife
- Rob Emanuel says to be sure to check out our website: www.wwset.org
- Bill Chanley & Rob Emanuel - We will have a Saturday toy making workshop in October. We're way behind in our toy drive.

[Raffles](#)

The club voted to have another raffle and this time the prize will be a \$100 gift certificate to Woodworker's Paradise. The drawing will be held at the November 22nd meeting. Contact Steve Brady if you want to buy tickets and can't make the meetings.

[Our next meeting](#)

Our next regular Monday Night Meeting will be held at Acadian Hardwoods in Rose City. Waid Gauthier will present a program about starting your own woodworking business. Be sure to bring your chairs and Show & Tell items. I'll be there a little early to take pictures of your Show & Tell items.

[2004 Meeting Schedule](#)

Here's our remaining 2004 program schedule. We need some suggestions for programs you would like to see next year. Contact Pete Nealley or any one of the board members with your ideas and requests.

[Regular Monday Night Meetings @ 7PM](#)

[October 25th](#) - Acadian - Waid Gauthier
Tips on starting a woodworking business

[November 22nd](#) - Acadian - Bill Chanley & Rob Emanuel

Sort and Prepare Toys for Distribution

NO REGULAR MEETING IN DECEMBER!

[Saturday Program Meetings @ 1PM](#)

[October 16th](#) - Bill Chanley & Rob Emanuel -
Toy Making Workshop II at Woodworker's Paradise

[November 6th or 13th](#) - To be announced.

Toy Drive

We are making progress on our toy drive, but we are still behind schedule. We're really going to have to get busy to come close to our goal this year. Not making our goal means a lot of deserving children will not have our toys to play with this year. Contacts:

Bill Chanley - 866-5967
Rob Emanuel - 729-9315
Richard Hicks - 982-5226

They can supply materials and patterns.



Winnie Rudd and Sue Caldwell built this maple box for a family heirloom bible.

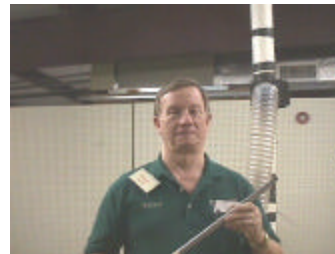


Joel McLean used pine and walnut to build this anniversary box for his dad and mother.

Show & Tells



Lyman Frugia brought one of the Christmas tree ornaments from our Saturday meeting.



Richard Hicks found this new style 'Monster Scraper' lathe tool on eBay.



Richard Osborn made fluted posts for a white oak desk. The fluting was hard to rout straight and even.



Taz Nelson made this mesquite bowl in a turning class he's taking from Lyman Frugia.



Don Lemp brought pictures of the curly maple bed he made with paduak and zebrawood inlays.



Earl Rutherford brought a walnut bowl, hickory and willow vases and mesquite vessels and shared some of the problems techniques he used to turn them.



Steve Nelson made a wooden pen and key chain from a small piece of old growth longleaf pine. It looks like a piece of

hardwood.

Door Prize Drawing

Lyman Frugia won the door prize drawing. Since he had a show & tell item, it was worth \$35.

Saturday Meeting



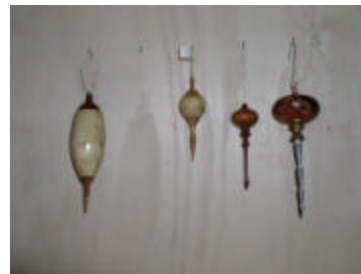
Lyman Frugia hosted our September 25th Saturday Meeting. He showed us how to turn Christmas ornaments, mostly

out of discarded Christmas trees.

Lyman gathers the discarded Christmas trees from the side of the road or sometimes from the collection points that the various cities establish after Christmas. He picks trees with relatively large trunks and strips the limbs for storage. When he strips the limbs, he leaves a short (1"-2") stub so the knots will not crack as the trunk dries. Drying the trunks before you turn them reduces the mess they make and also makes them more stable.

The ornaments are actually miniature hollow vessels with decorative attachments. Due to their size, you need smaller tools to hollow out the insides. Lyman showed us several tools he made from Allen wrenches. Since the wood is very soft (except the knots), you don't need really strong tools. The blanks are

prepared by cutting off the limb stubs and mounting to a faceplate or check. Start by turning the outside to the desired shape, then drill and start hollowing the insides. Watch the knots and if they start to crack, use some of the thin cyanoacrylate glue to stabilize the cracks. Having the knots as part of the ornament really adds a lot to the overall look and design of the finished ornament, so they're worth the trouble. Turn separate finials (or icicles as they're sometimes called on ornaments) out of a contrasting wood. They should generally be thin and delicate so they don't add a lot of



weight to the ornament. Turn attaching sockets to the ornament and finials and glue them in place.

You've made a good ornament if it weighs less than 2 ounces. Install thin wire loops or eyelets as hangers.

Club Elections

The nominating committee, chaired by our President-Elect Richard Osborn, will present a slate of officers at the October meeting. The club will take nominations from the floor and vote on the officers at the November 22nd meeting. The new officers will take office at the January meeting.

Program

B.J. Holt shared his trip to this year's National Woodworking Show in Atlanta. Several major companies have recently made big announcements. Probably the biggest came from Black & Decker. They're buying the Delta and Porter Cable lines from Pentair. Pentair will concentrate on its core businesses, enclosures and water treatment.

Member Tips

At least for the time being, they plan to continue making the Delta and Porter Cable tools as in the past. Delta also announced that they will start making their contractors



saw overseas.

There are still some of the "Made in the USA" saws available, so get them while they last.

Woodworker's Paradise is carrying some new products. One of the neatest is CMT's router accessory that creates carved cabinet door panels. A special router bit and guide follows a dimensional template that cuts into the panel so that it looks like its been carved by hand. There's a large selection of templates and designs available. If you're planning to make some cabinet doors, check this item out.

B.J. also asked for the club's help answering his customer's biggest question - "What tool should I buy first for my new shop?" He passed out a survey with a list of tools so we could mark the ones we use the most and consider critical in our shops. The summary of our responses for the large stationary tools:

- First, Table saw
- Second, Band saw
- Third, Router table & router
- Fourth, Tie: Planer or Jointer
- Fifth, Miter saw
- Sixth, Drill press
- Seventh, Tie: Dust collector or Spindle sander

And for the small hand tools:

- First, Cordless drill driver
- Second, Router
- Third, Palm random orbit sander

How does your shop stack up against the list?

Jody Cowart sent this tip for sizing the rails & stiles on cabinet doors. From Jody...

I just finished a lot of cabinet doors for the shop, and this is what I found.

Door measurements:

First measure the depth of the profile on your rail and stile bit. Most are $7/16$ to $1/2$. My cutters are $7/16$. An eye-pleasing rail is 2. Cut all your rails and stiles at $2 \frac{7}{16}$. $7/16$ will be taken up with the cope cut on the rails. To get the measurement of your cut pieces just subtract by 4. The stiles are the height of the door. The rails are the width minus 4. The panel length is the height minus 4. The width is the length of the rail minus $1/4$ for solid raised panels and $1/8$ for plywood flat panels. This will even work when your doors have a strange fraction. Say your total door is $14 \frac{11}{16}$ wide X $16 \frac{3}{16}$ high. The stiles are $16 \frac{3}{16}$. The rails are $10 \frac{11}{16}$ ($14 \frac{11}{16} - 4$). The panel is $12 \frac{3}{16}$ ($16 \frac{3}{16} - 4$) X $10 \frac{7}{16}$ ($10 \frac{11}{16} - 1/4$).

Editors Note: Thanks to Jody for taking the time to share this information with all of us. I hope we have a lot more of these in the future! You can simply send them to me by email at hicksrjh@ih2000.net or by mail to:

Richard Hicks
849 Memorial Blvd
Port Arthur, TX 77640